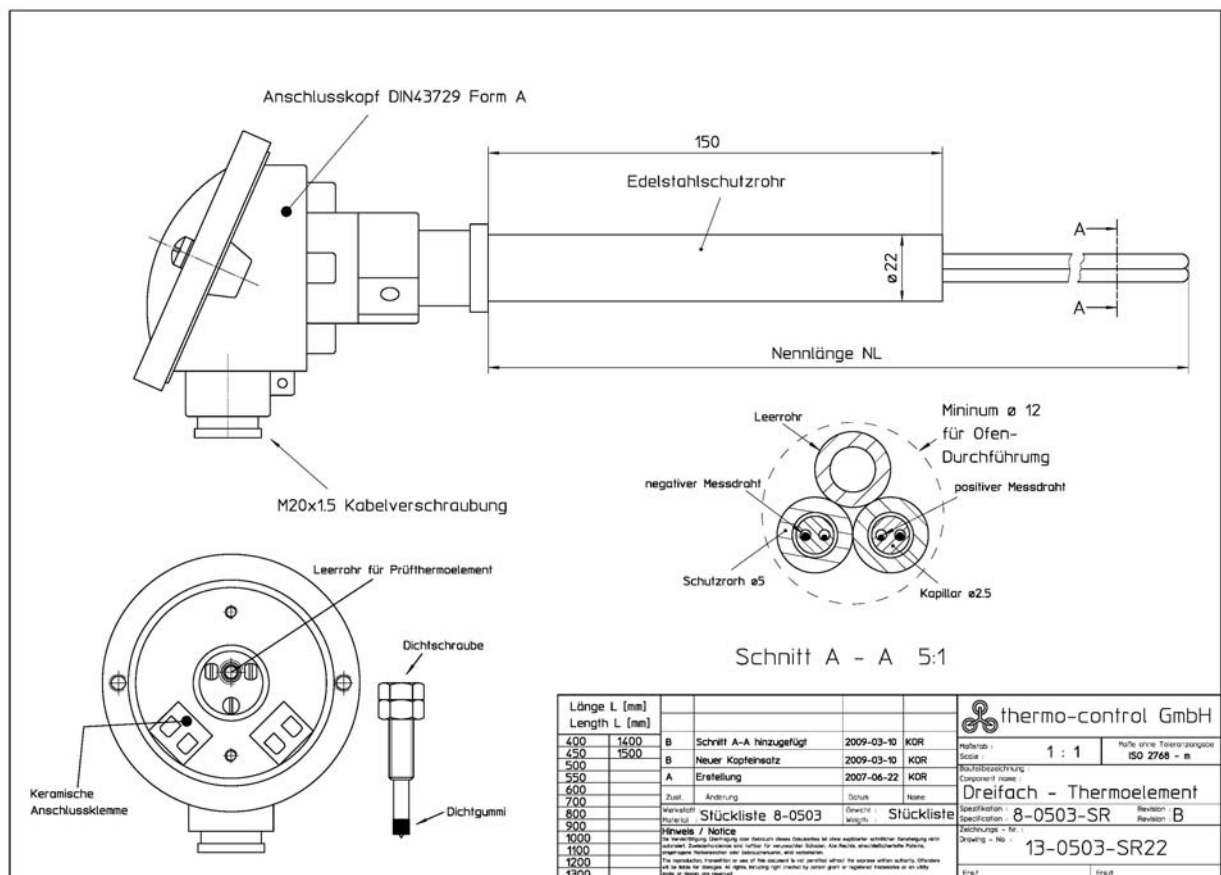


## Spezifikation 8.1.10.SR22

Rev A

<b>Produkt</b> Zweifach-Thermoelement Dreifach-Thermoelement Vierfach-Thermoelement	<b>Anzahl Thermopaare</b> 1 Stk. 2 Stk. 3 Stk.	<b>Schlüssel<sup>1</sup></b> 02 03 04	<b>Typ</b> Typ S Typ R Typ B Typ K Typ N	<b>Schlüssel<sup>1</sup></b> 01 02 03 04 05	<b>Anzahl Leerrohre</b> 1
<b>Schutzrohre</b> Keramik 99.7% Al <sub>2</sub> O <sub>3</sub> Ø5mm Saphirglas 99.9% Al <sub>2</sub> O <sub>3</sub> SX Ø5mm	<b>Mech. Anschluss</b> Halterohr W1.4310 Ø22mm Länge 150mm		<b>Standart Längen L [mm]<sup>1</sup></b> 400 500 600 700 800 900		1000 1100 1200 1300 1400 1500
<b>Messdraht</b> positiv Ø 0,35mm negativ Ø 0,50mm	<b>max. He-Leckrate</b> $1.0 \cdot 10^{-6} \frac{\text{mbar} \cdot \text{l}}{\text{s}}$	<b>Druckfest bis</b> $p_{e,\text{max}} = 21 \text{ bar}$			

### Zeichnung

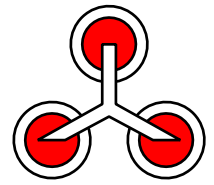


Revision	Datum	Änderung zum letzten Stand
A	2008-11-20	Erst-Ausführung

<sup>1</sup> Beispiel: Spezifikation für 3fach Thermoelement Typ S Nennlänge 600mm mit Kleinflansch DN25 lautet 8-050301-600KF25

<sup>2</sup> Lesen Sie hierzu die Bedienungsanleitung zur Montage des Thermoelementes durch, um mögliche Schäden zu vermeiden!



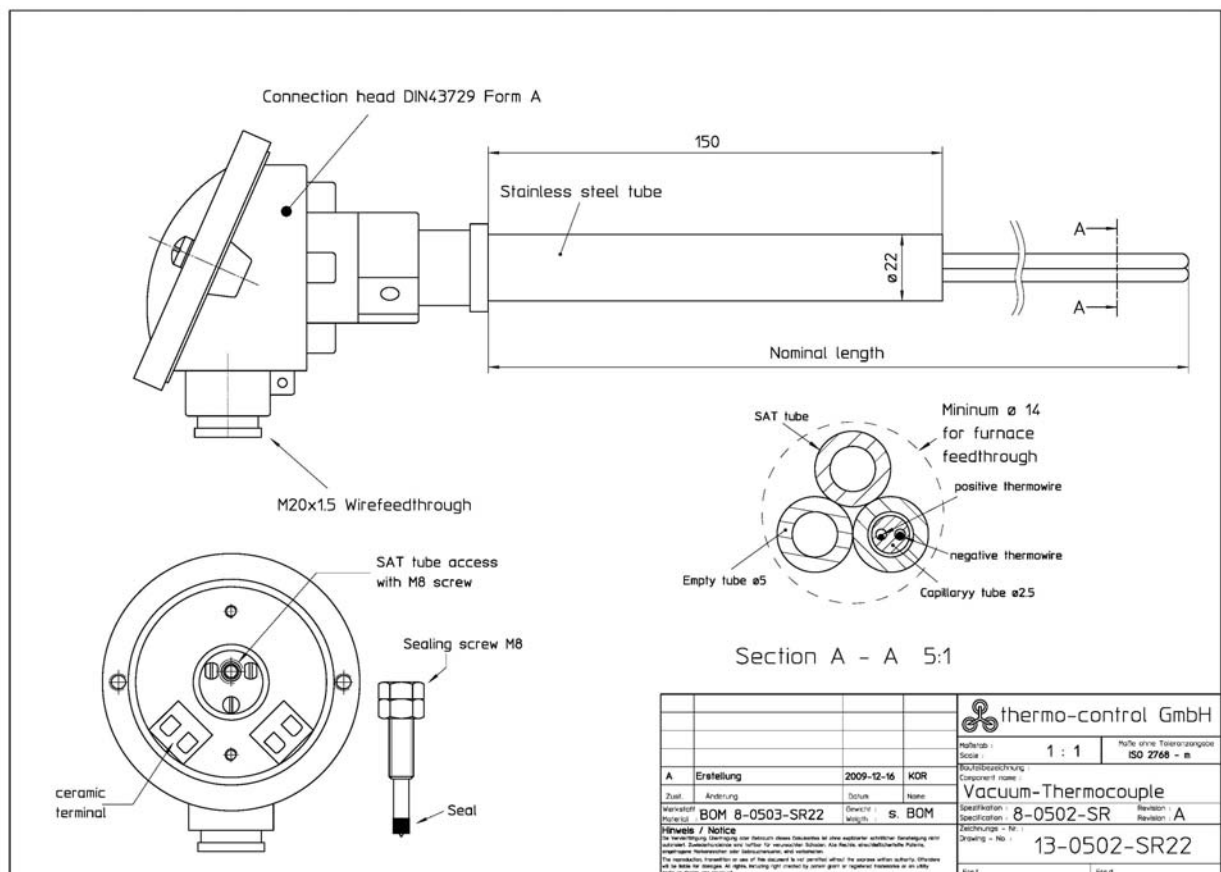


## Specification 8.1.10.SR22

Rev A

<b>Product</b> Double - Thermoement Triple - Thermoement Quad - Thermoement	<b>No of thermocouples</b> 1 Stk. 2 Stk. 3 Stk.	<b>Order key<sup>1</sup></b> 02 03 04	<b>Type</b> Type S Type R Type B Type K Type N	<b>Order key<sup>1</sup></b> 01 02 03 04 05	<b>No. of empty tubes</b> 1
<b>Protection materials</b> Ceramic 99.7% Al <sub>2</sub> O <sub>3</sub> Ø5mm Sapphire-glass 99.9% Al <sub>2</sub> O <sub>3</sub> Ø5mm	<b>Mech. fitting</b> Tube W1.4305 Ø22 mm length 150 mm		<b>Standard length L [mm]<sup>1</sup></b>		
	<b>Recommended max pressure during production based on fitting<sup>2</sup></b> 10 bar		400	1000	
			500	1100	
			600	1200	
			700	1300	
			800	1400	
			900	1500	
<b>Thermocouple wire dimensions</b> positive Ø 0,35mm negative Ø 0,50mm	<b>Max. He-leaking rate</b> $1.0 \cdot 10^{-6} \frac{\text{mbar} \cdot \text{l}}{\text{s}}$	<b>Pressure tight</b> $p_{e,\text{max}} = 21 \text{ bar}$			

### Overview drawing



Revision	Date	Changes
A	2008-11-20	Initial draft

<sup>1</sup> Example: Specification for a triple-Thermoement as Type S with a nominal length of 600mm is 8-050301-600SR22

<sup>2</sup> Please read the manual carefully for the correct fitting of the thermocouple to prevent damages.



