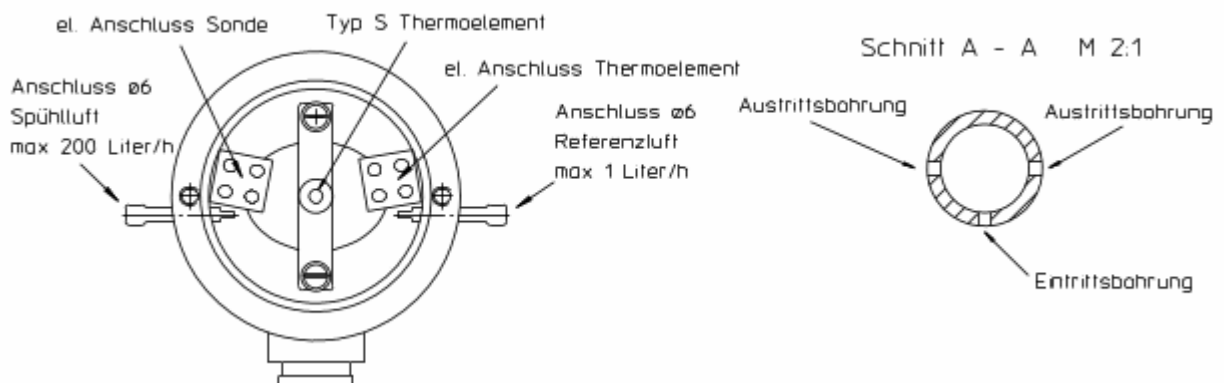
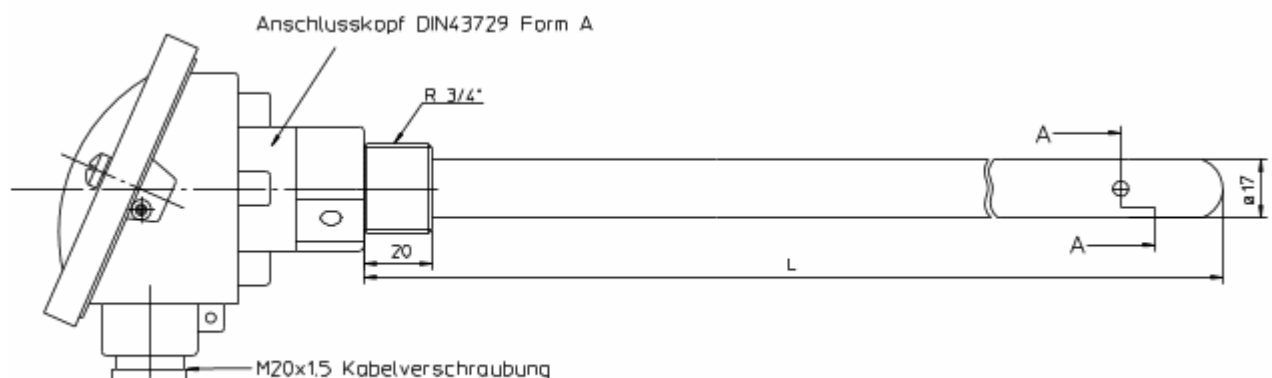


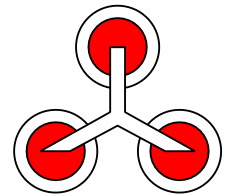
Spezifikation OP-011-R34 Rev A

Produkt	Anzahl Thermoelement	Typ	Anzahl Elektroden	
Sauerstoffsonde	1	Typ S, Klasse 1	1	
Material Minuspol-Leitung	Elektrode	Material Schutzrohr	Material Sondenrohr	
Pt pure	Pt Spirale	99% Al ₂ O ₃	Zirkonoxid	
Anwendung	Mech. Anschluss		Standart Länge L [mm]	
O ₂ - Gehaltsmessung z.B. bei Aufkohlung	R3/4" Gewinde		400	900
			500	1000
			600	1200
Druckbereich	Ausgangssignal bei O ₂ Gehalt			
Vakuumdicht	0V	0%	700	
Max. Druck 5bar	1,2V	21%	800	

Zeichnung



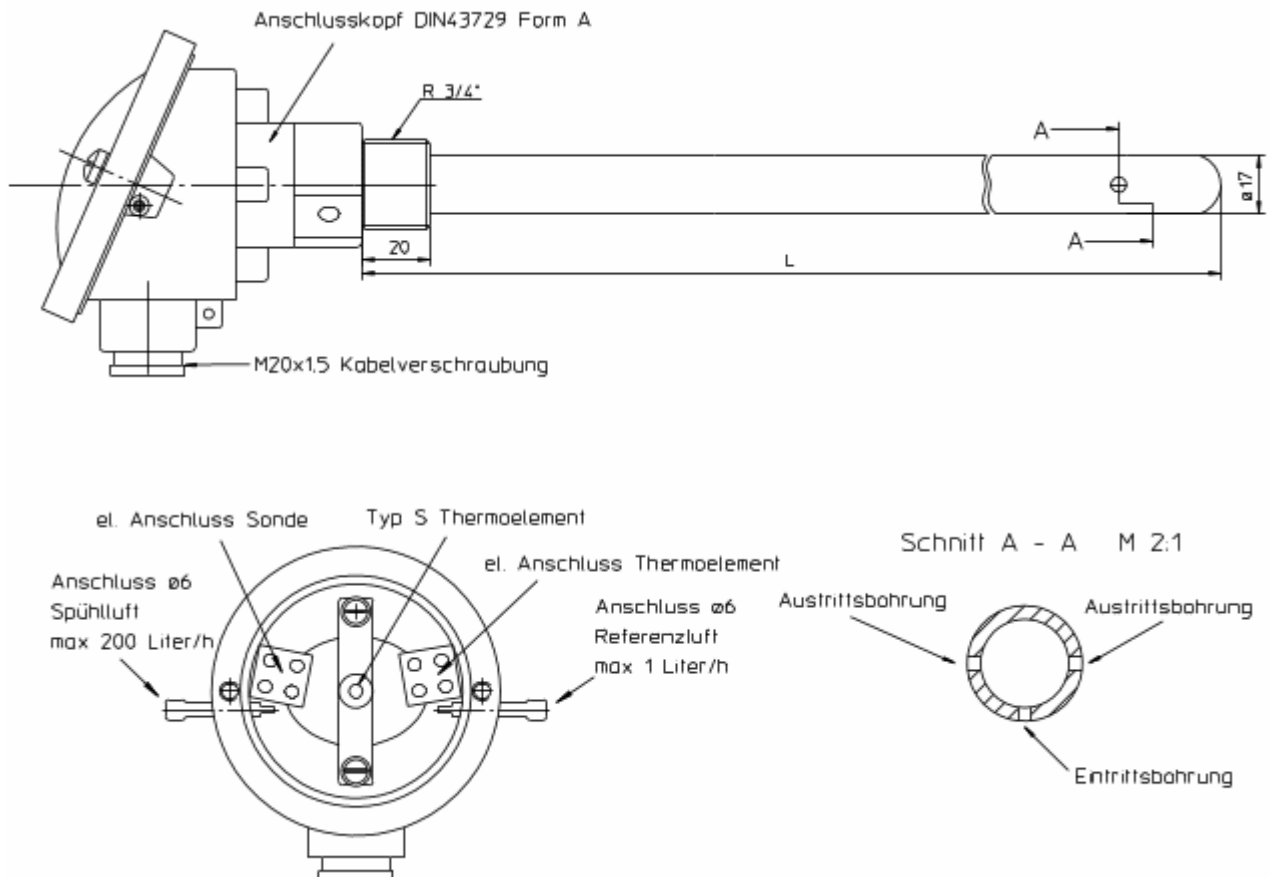
Revision	Datum	Änderung zum letzten Stand
A	2007-04-01	Erst-Ausgabe



Specification OP-011R34 Rev A

Product	Number thermocouples	Type	Number of electrodes	
Oxygen probe	1	Type S, Class 1	1	
Material Minus-wire	Material Electrode	Material protection tube	Inner probe tube material	
Pt pure	Pt helix	99% Al ₂ O ₃	Zirconia	
Application	Mounting system	Standard length L [mm]		
O ₂ concentration measurement e.g. at Carburization	3/4" screw	400	900	
		500	1000	
		600	1200	
		700		
Pressure range	Output level at O ₂ concentration		800	
Vacuum sealed	0V	0%		
Max. pressure 5bar	1,2V	21%		

Drawing



Revision	Date	Changes to previous revision
A	2007-04-01	Initial specification