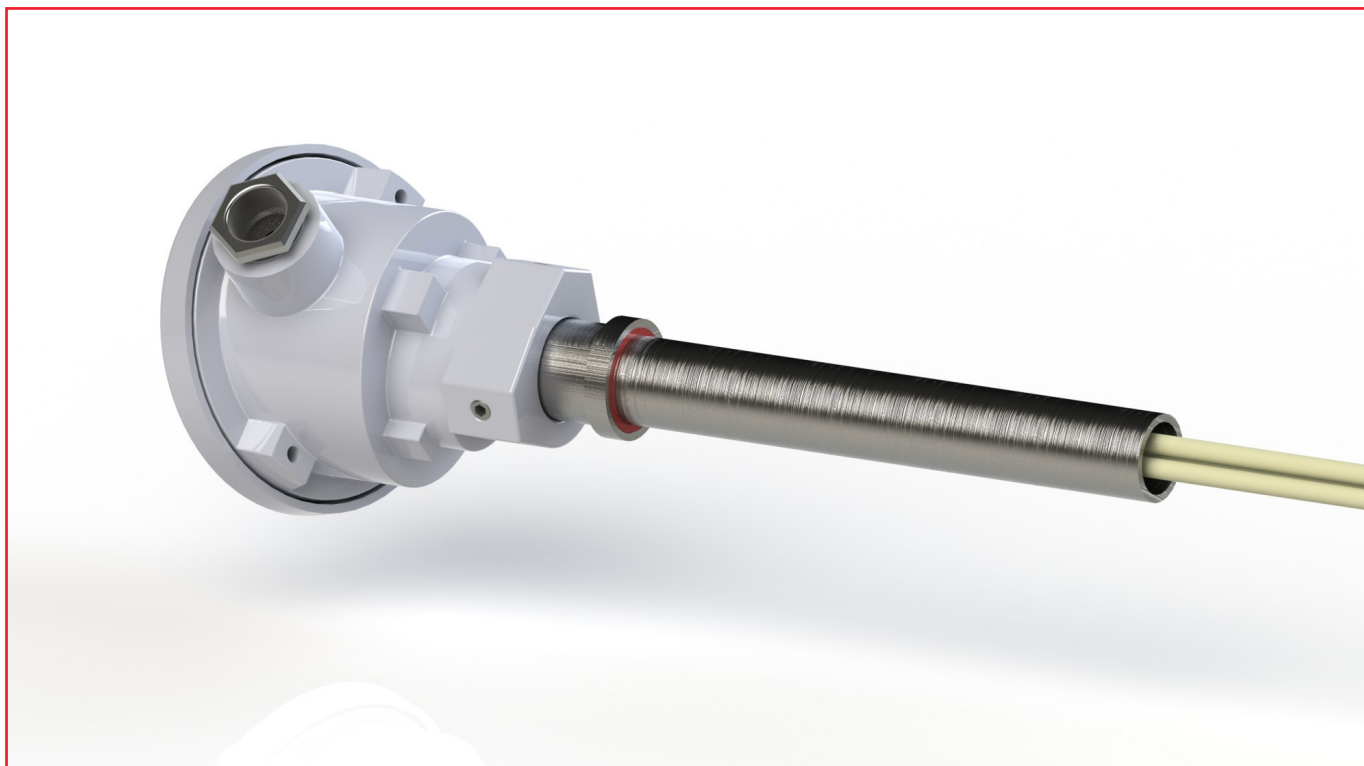


Connection with stainless steel tube



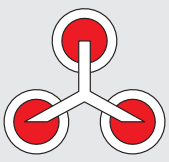
Standard connection is a tube (W1.4305) of Ø22 mm x 150 mm length. Types with Ø 1" Zoll x 150 mm or Ø32 mm x 150 mm are also available.

Order chart:

8	-	PPXXZZ	-	LLLLA
		PP – Vacuum tight pressure proof up to 05 – 5 bar 10 – 10 bar 15 – 15 bar XX – Number of thermocouples (TP) 02 – 1 TP + empty tube 03 – 2 TP + empty tube 04 – 3 TP + empty tube ZZ – Alloy of thermocouple 01 – PtRh10% - Pt (type S) 02 – PtRh13% - Pt (type R) 03 – PtRh30% - PtRh16 (type B) 04 – NiCr – Ni (type K) 05 – NiCrSi – NiSi (type N)		LLLL – Nominal length [mm] 0400 – 400 mm up to 1600 – 1600 mm In 100 mm steps A – Connection SR22 – Ø22 mm x 150 mm

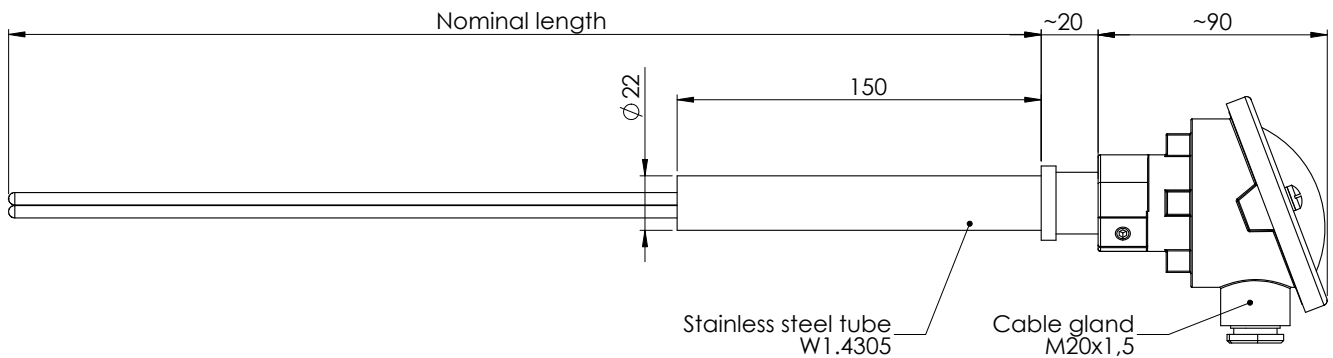
Example: 8-050301-0600SR22

Thermocouple for vacuum atmosphere, gas tight and pressure proof up to 5 bar, with 2 x type S thermocouples + 1 additional empty tube for controlling measurements, a nominal length of 600 mm and a Ø22 mm x 150 mm tube.



Connection with stainless steel tube

Vacuum thermocouple with $\varnothing 22 \times 150$ tube



Equipped with 1 thermocouple type S (PtRh10% - Pt)

Material number	Description	Specification
510225	Vacuum thermocouple 600 mm, 1 x type S + empty tube, 22 x 150 tube	8-050201-0600SR22
510226	Vacuum thermocouple 700 mm, 1 x type S + empty tube, 22 x 150 tube	8-050201-0700SR22
510227	Vacuum thermocouple 800 mm, 1 x type S + empty tube, 22 x 150 tube	8-050201-0800SR22
510228	Vacuum thermocouple 900 mm, 1 x type S + empty tube, 22 x 150 tube	8-050201-0900SR22
510229	Vacuum thermocouple 1000 mm, 1 x type S + empty tube, 22 x 150 tube	8-050201-1000SR22
510231	Vacuum thermocouple 1200 mm, 1 x type S + empty tube, 22 x 150 tube	8-050201-1200SR22

10

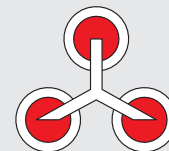
Equipped with 2 thermocouples type S (PtRh10% - Pt)

Material number	Description	Specification
510325	Vacuum thermocouple 600 mm, 2 x type S + empty tube, 22 x 150 tube	8-050301-0600SR22
510326	Vacuum thermocouple 700 mm, 2 x type S + empty tube, 22 x 150 tube	8-050301-0700SR22
510327	Vacuum thermocouple 800 mm, 2 x type S + empty tube, 22 x 150 tube	8-050301-0800SR22
510328	Vacuum thermocouple 900 mm, 2 x type S + empty tube, 22 x 150 tube	8-050301-0900SR22
510329	Vacuum thermocouple 1000 mm, 2 x type S + empty tube, 22 x 150 tube	8-050301-1000SR22
510331	Vacuum thermocouple 1200 mm, 2 x type S + empty tube, 22 x 150 tube	8-050301-1200SR22

Equipped with 3 thermocouples type S (PtRh10% - Pt)

Material number	Description	Specification
510425	Vacuum thermocouple 600 mm, 3 x type S + empty tube, 22 x 150 tube	8-050401-0600SR22
510426	Vacuum thermocouple 700 mm, 3 x type S + empty tube, 22 x 150 tube	8-050401-0700SR22
510427	Vacuum thermocouple 800 mm, 3 x type S + empty tube, 22 x 150 tube	8-050401-0800SR22
510428	Vacuum thermocouple 900 mm, 3 x type S + empty tube, 22 x 150 tube	8-050401-0900SR22
510429	Vacuum thermocouple 1000 mm, 3 x type S + empty tube, 22 x 150 tube	8-050401-1000SR22
510431	Vacuum thermocouple 1200 mm, 3 x type S + empty tube, 22 x 150 tube	8-050401-1200SR22

Connection with stainless steel tube

**Equipped with 1 thermocouple type S (PtRh10% - Pt)**

Material number	Description	Specification
510225	Vacuum thermocouple 600 mm, 1 x type S + empty tube, 22 x 150 tube	8-100201-0600SR22
510226	Vacuum thermocouple 700 mm, 1 x type S + empty tube, 22 x 150 tube	8-100201-0700SR22
510227	Vacuum thermocouple 800 mm, 1 x type S + empty tube, 22 x 150 tube	8-100201-0800SR22
510228	Vacuum thermocouple 900 mm, 1 x type S + empty tube, 22 x 150 tube	8-100201-0900SR22
510229	Vacuum thermocouple 1000 mm, 1 x type S + empty tube, 22 x 150 tube	8-100201-1000SR22
510231	Vacuum thermocouple 1200 mm, 1 x type S + empty tube, 22 x 150 tube	8-100201-1200SR22

Equipped with 2 thermocouples type S (PtRh10% - Pt)

Material number	Description	Specification
510325	Vacuum thermocouple 600 mm, 2 x type S + empty tube, 22 x 150 tube	8-100301-0600SR22
510326	Vacuum thermocouple 700 mm, 2 x type S + empty tube, 22 x 150 tube	8-100301-0700SR22
510327	Vacuum thermocouple 800 mm, 2 x type S + empty tube, 22 x 150 tube	8-100301-0800SR22
510328	Vacuum thermocouple 900 mm, 2 x type S + empty tube, 22 x 150 tube	8-100301-0900SR22
510329	Vacuum thermocouple 1000 mm, 2 x type S + empty tube, 22 x 150 tube	8-100301-1000SR22
510331	Vacuum thermocouple 1200 mm, 2 x type S + empty tube, 22 x 150 tube	8-100301-1200SR22

Equipped with 3 thermocouples type S (PtRh10% - Pt)

Material number	Description	Specification
9200093	Vacuum thermocouple 600 mm, 3 x type S + empty tube, 22 x 150 tube	8-100401-0600SR22
92001411	Vacuum thermocouple 700 mm, 3 x type S + empty tube, 22 x 150 tube	8-100401-0700SR22
92001412	Vacuum thermocouple 800 mm, 3 x type S + empty tube, 22 x 150 tube	8-100401-0800SR22
92000101	Vacuum thermocouple 900 mm, 3 x type S + empty tube, 22 x 150 tube	8-100401-0900SR22
92001413	Vacuum thermocouple 1000 mm, 3 x type S + empty tube, 22 x 150 tube	8-100401-1000SR22
92000102	Vacuum thermocouple 1200 mm, 3 x type S + empty tube, 22 x 150 tube	8-100401-1200SR22