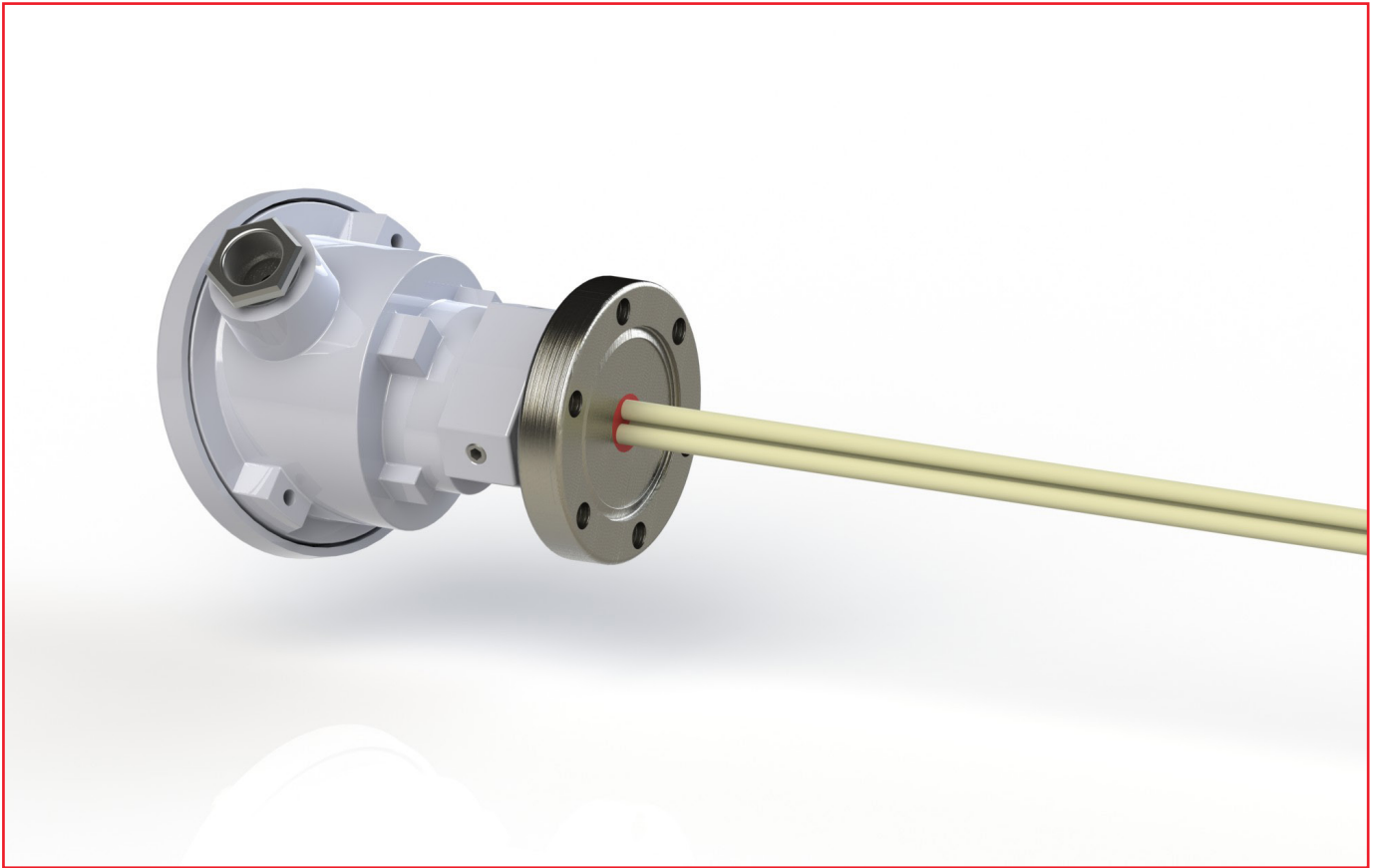


## Connection with CF-flange

### Connection with CF-flange



The high vacuum type has a maximum admissible leak rate of  $1.0 \cdot 10^{-8}$  mbar · l/s. Standard width is the nominal width DN 40. Further nominal widths are available on request.

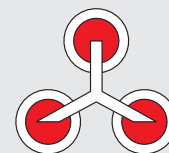
#### Order chart:

8	-	<i>PPXXZZ</i>	-	<i>LLLLA</i>
		PP – Pressure range vacuum tight up to 05 – 5 bar high pressure  XX – Number of thermocouples (TP) 02 – 1 TP + empty tube 03 – 2 TP + empty tube 04 – 3 TP + empty tube  ZZ – Alloy of thermocouple 01 – PtRh10% - Pt (type S) 02 – PtRh13% - Pt (type R) 03 – PtRh30% - PtRh16 (type B) 04 – NiCr – Ni (type K) 05 – NiCrSi – NiSi (type N)		LLLL – Nominal length [mm] 0400 – 400 mm up to 1600 – 1600 mm in 100 mm steps  A – Connection CF40 – nominal width DN40

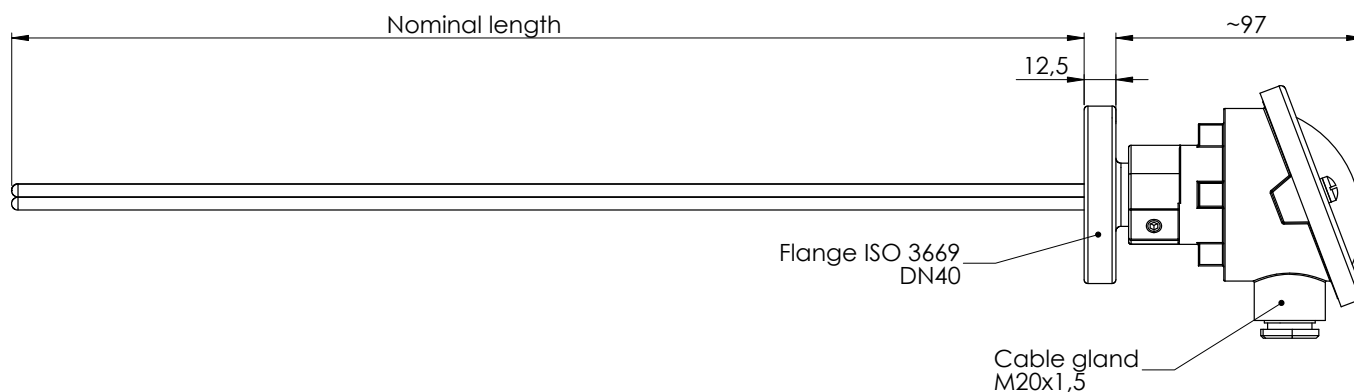
#### Example: 8-050301-0700CF40

Thermocouple for vacuum atmosphere, gas tight and pressure proof up to 5 bar, with 2 x type S thermocouples + 1 additional empty tube for controlling measurements, a nominal length of 700 mm and a CF-flange with the nominal width DN 40.

# Connection with CF-flange



## Vacuum thermocouple with CF-flange



### Equipped with 1 thermocouple type S (PtRh10% - Pt)

Material number	Description	Specification
92000916	Vacuum thermocouple 600 mm, 1 x type S + empty tube, CF-flange DN 40	8-050201-0600CF40
92000917	Vacuum thermocouple 700 mm, 1 x type S + empty tube, CF-flange DN 40	8-050201-0700CF40
92000918	Vacuum thermocouple 800 mm, 1 x type S + empty tube, CF-flange DN 40	8-050201-0800CF40
92000919	Vacuum thermocouple 900 mm, 1 x type S + empty tube, CF-flange DN 40	8-050201-0900CF40
92000920	Vacuum thermocouple 1000 mm, 1 x type S + empty tube, CF-flange DN 40	8-050201-1000CF40
92000921	Vacuum thermocouple 1200 mm, 1 x type S + empty tube, CF-flange DN 40	8-050201-1200CF40

### Equipped with 2 thermocouples type S (PtRh10% - Pt)

Material number	Description	Specification
92000922	Vacuum thermocouple 600 mm, 2 x type S + empty tube, CF-flange DN 40	8-050301-0600CF40
92000923	Vacuum thermocouple 700 mm, 2 x type S + empty tube, CF-flange DN 40	8-050301-0700CF40
92000924	Vacuum thermocouple 800 mm, 2 x type S + empty tube, CF-flange DN 40	8-050301-0800CF40
92000925	Vacuum thermocouple 900 mm, 2 x type S + empty tube, CF-flange DN 40	8-050301-0900CF40
92000926	Vacuum thermocouple 1000 mm, 2 x type S + empty tube, CF-flange DN 40	8-050301-1000CF40
92000927	Vacuum thermocouple 1200 mm, 2 x type S + empty tube, CF-flange DN 40	8-050301-1200CF40