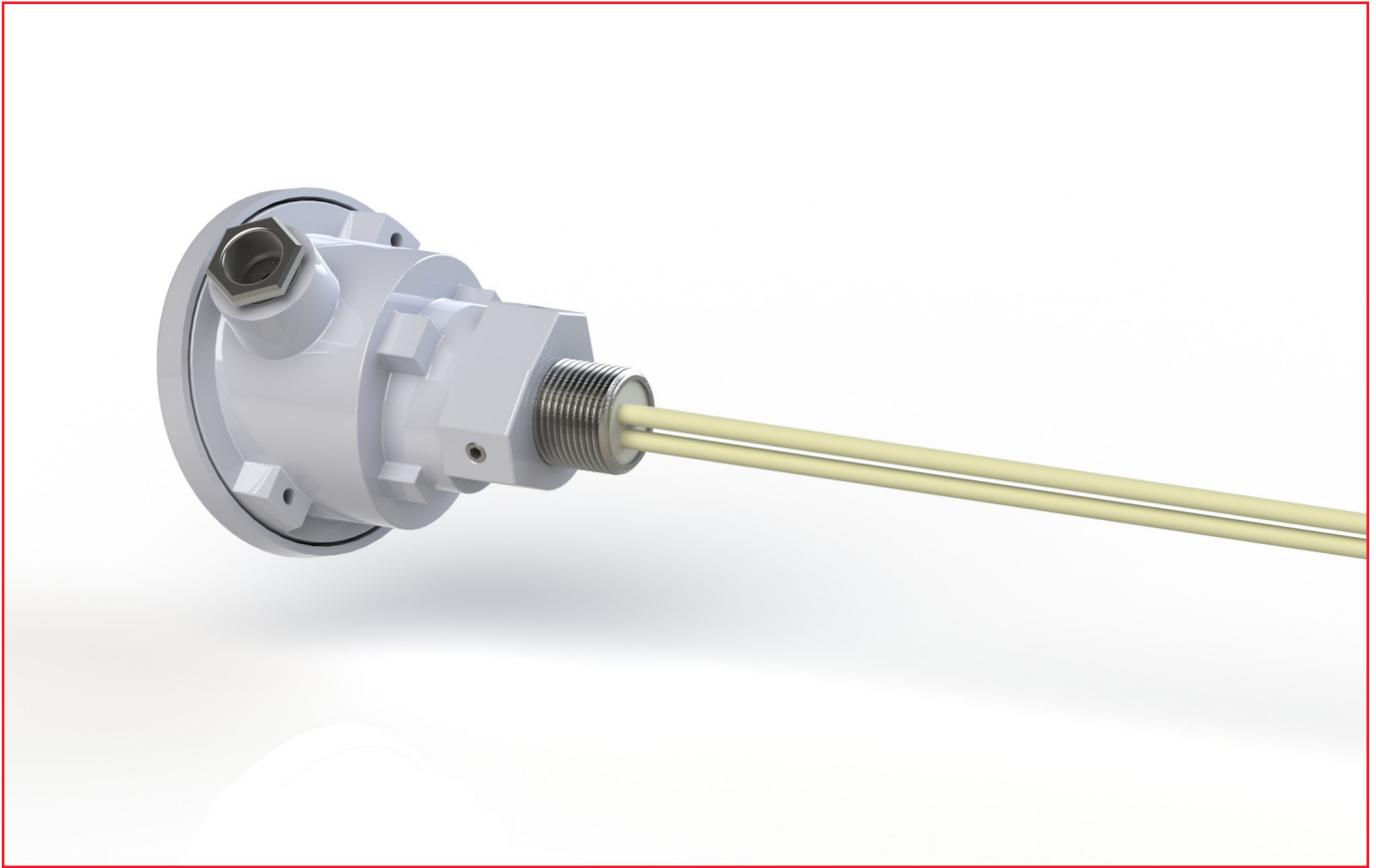


## Connection by screw socket

### Connection by screw socket



2

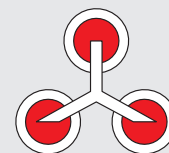
Standard connection is a G3/4 inch DIN 228 with a thread length of 20 mm types with a G1 inch thread are also available.

#### Order chart:

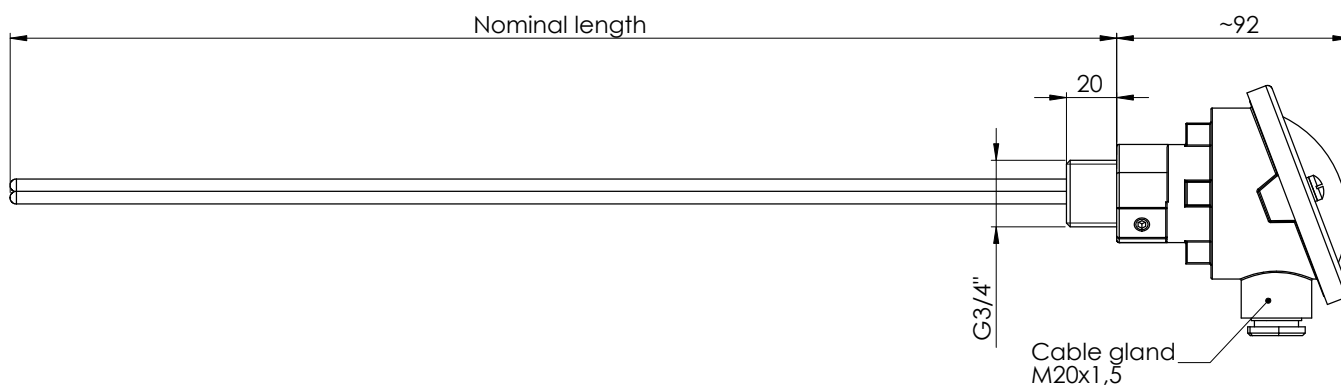
8	-	01XXZZ	-	LLLLA
		01 – Inert gas type XX – Number of thermocouples (TP) 02 – 1 TP + empty tube 03 – 2 TP + empty tube 04 – 3 TP + empty tube  ZZ – Alloy of thermocouple 01 – PtRh10% - Pt (type S) 02 – PtRh13% - Pt (type R) 03 – PtRh30% - PtRh16 (type B) 04 – NiCr – Ni (type K) 05 – NiCrSi – NiSi (type N)		LLLL – Nominal length [mm] 0400 – 400 mm up to 1600 – 1600 mm In 100 mm steps  A – Connection G34 – G3/4 thread G1 – G1 thread G1SW28 – G1 thread with SW28 connection

#### Example: 8-010301-0600G34

Thermocouple for inert gas with 2 x type S thermocouples + 1 additional empty tube for controlling measurements, with a nominal length of 600 mm and a G3/4" threaded connection.



## Inert gas thermocouples with G3/4 screw thread

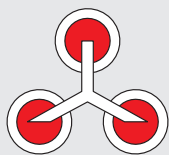


### Equipped with 1 thermocouple type S (PtRh10% - Pt)

Material number	Description	Specification
501212	Inert gas thermocouple 600 mm, 1 x type S + empty tube, G3/4 threaded connection	8-010201-0600G34
501213	Inert gas thermocouple 700 mm, 1 x type S + empty tube, G3/4 threaded connection	8-010201-0700G34
501214	Inert gas thermocouple 800 mm, 1 x type S + empty tube, G3/4 threaded connection	8-010201-0800G34
501215	Inert gas thermocouple 900 mm, 1 x type S + empty tube, G3/4 threaded connection	8-010201-0900G34
501216	Inert gas thermocouple 1000 mm, 1 x type S + empty tube, G3/4 threaded connection	8-010201-1000G34
501218	Inert gas thermocouple 1200 mm, 1 x type S + empty tube, G3/4 threaded connection	8-010201-1200G34

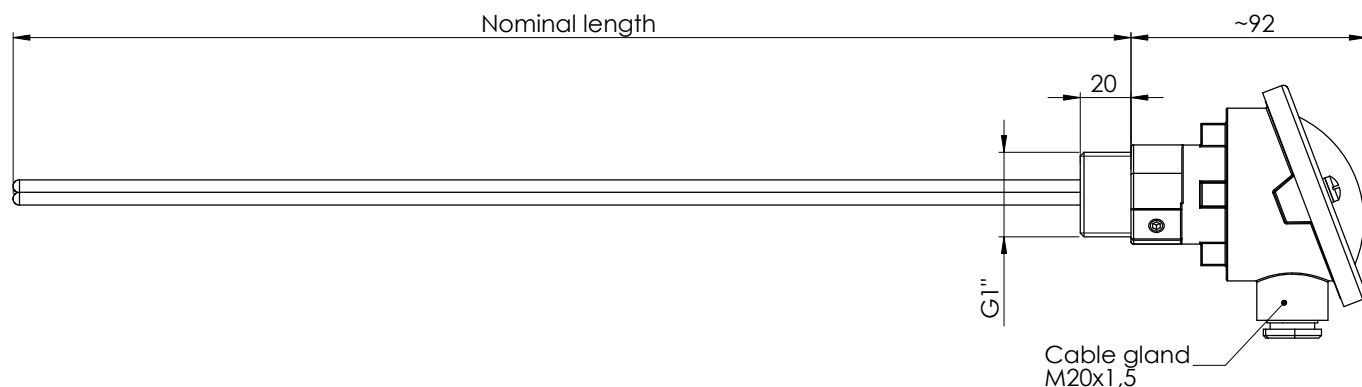
### Equipped with 2 thermocouples type S (PtRh10% - Pt)

Material number	Description	Specification
501312	Inert gas thermocouple 600 mm, 2 x type S + empty tube, G3/4 threaded connection	8-010301-0600G34
501313	Inert gas thermocouple 700 mm, 2 x type S + empty tube, G3/4 threaded connection	8-010301-0700G34
501314	Inert gas thermocouple 800 mm, 2 x type S + empty tube, G3/4 threaded connection	8-010301-0800G34
501315	Inert gas thermocouple 900 mm, 2 x type S + empty tube, G3/4 threaded connection	8-010301-0900G34
501316	Inert gas thermocouple 1000 mm, 2 x type S + empty tube, G3/4 threaded connection	8-010301-1000G34
501318	Inert gas thermocouple 1200 mm, 2 x type S + empty tube, G3/4 threaded connection	8-010301-1200G34



## Connection by screw socket

### Inert gas thermocouple with G1 threaded connection



#### Equipped with 1 thermocouple type S (PtRh10% - Pt)

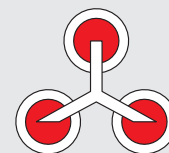
Material number	Description	Specification
92000840	Inert gas thermocouple 600 mm, 1 x type S + empty tube, G1 threaded connection	8-010201-0600G1
92000841	Inert gas thermocouple 700 mm, 1 x type S + empty tube, G1 threaded connection	8-010201-0700G1
92000842	Inert gas thermocouple 800 mm, 1 x type S + empty tube, G1 threaded connection	8-010201-0800G1
92000843	Inert gas thermocouple 900 mm, 1 x type S + empty tube, G1 threaded connection	8-010201-0900G1
92000844	Inert gas thermocouple 1000 mm, 1 x type S + empty tube, G1 threaded connection	8-010201-1000G1
92000845	Inert gas thermocouple 1200 mm, 1 x type S + empty tube, G1 threaded connection	8-010201-1200G1

4

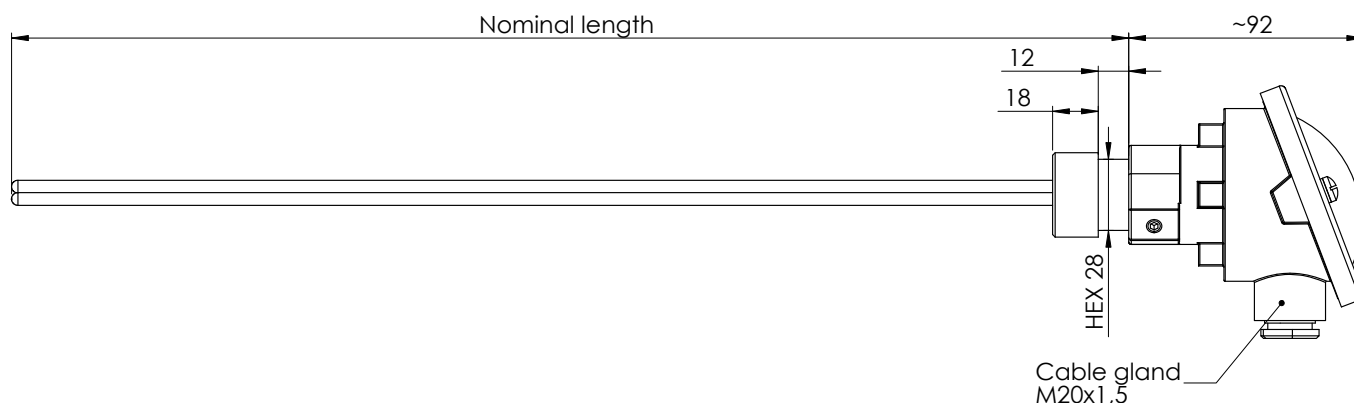
#### Equipped with 2 thermocouples type S (PtRh10% - Pt)

Material number	Description	Specification
92000836	Inert gas thermocouple 600 mm, 2 x type S + empty tube, G1 threaded connection	8-010301-0600G1
521039	Inert gas thermocouple 700 mm, 2 x type S + empty tube, G1 threaded connection	8-010301-0700G1
92000837	Inert gas thermocouple 800 mm, 2 x type S + empty tube, G1 threaded connection	8-010301-0800G1
92000838	Inert gas thermocouple 900 mm, 2 x type S + empty tube, G1 threaded connection	8-010301-0900G1
521040	Inert gas thermocouple 1000 mm, 2 x type S + empty tube, G1 threaded connection	8-010301-1000G1
92000839	Inert gas thermocouple 1200 mm, 2 x type S + empty tube, G1 threaded connection	8-010301-1200G1

## Connection by screw socket



## Inert gas thermocouple with G1 threaded connection with SW28 connection



## Equipped with 1 thermocouple type S (PtRh10% - Pt)

Material number	Description	Specification
92000846	Inert gas thermocouple 600 mm, 1 x type S + empty tube, G1 threaded connection with SW28	8-010201-0600G1SW28
92000847	Inert gas thermocouple 700 mm, 1 x type S + empty tube, G1 threaded connection with SW28	8-010201-0700G1SW28
92000848	Inert gas thermocouple 800 mm, 1 x type S + empty tube, G1 threaded connection with SW28	8-010201-0800G1SW28
92000849	Inert gas thermocouple 900 mm, 1 x type S + empty tube, G1 threaded connection with SW28	8-010201-0900G1SW28
92000850	Inert gas thermocouple 1000 mm, 1 x type S + empty tube, G1 threaded connection with SW28	8-010201-1000G1SW28
92000851	Inert gas thermocouple 1200 mm, 1 x type S + empty tube, G1 threaded connection with SW28	8-010201-1200G1SW28

## Equipped with 2 thermocouples type S (PtRh10% - Pt)

Material number	Description	Specification
92000852	Inert gas thermocouple 600 mm, 2 x type S + empty tube, G1 threaded connection with SW28	8-010301-0600G1SW28
92000853	Inert gas thermocouple 700 mm, 2 x type S + empty tube, G1 threaded connection with SW28	8-010301-0700G1SW28
92000854	Inert gas thermocouple 800 mm, 2 x type S + empty tube, G1 threaded connection with SW28	8-010301-0800G1SW28
92000855	Inert gas thermocouple 900 mm, 2 x type S + empty tube, G1 threaded connection with SW28	8-010301-0900G1SW28
92000856	Inert gas thermocouple 1000 mm, 2 x type S + empty tube, G1 threaded connection with SW28	8-010301-1000G1SW28
92000857	Inert gas thermocouple 1200 mm, 2 x type S + empty tube, G1 threaded connection with SW28	8-010301-1200G1SW28